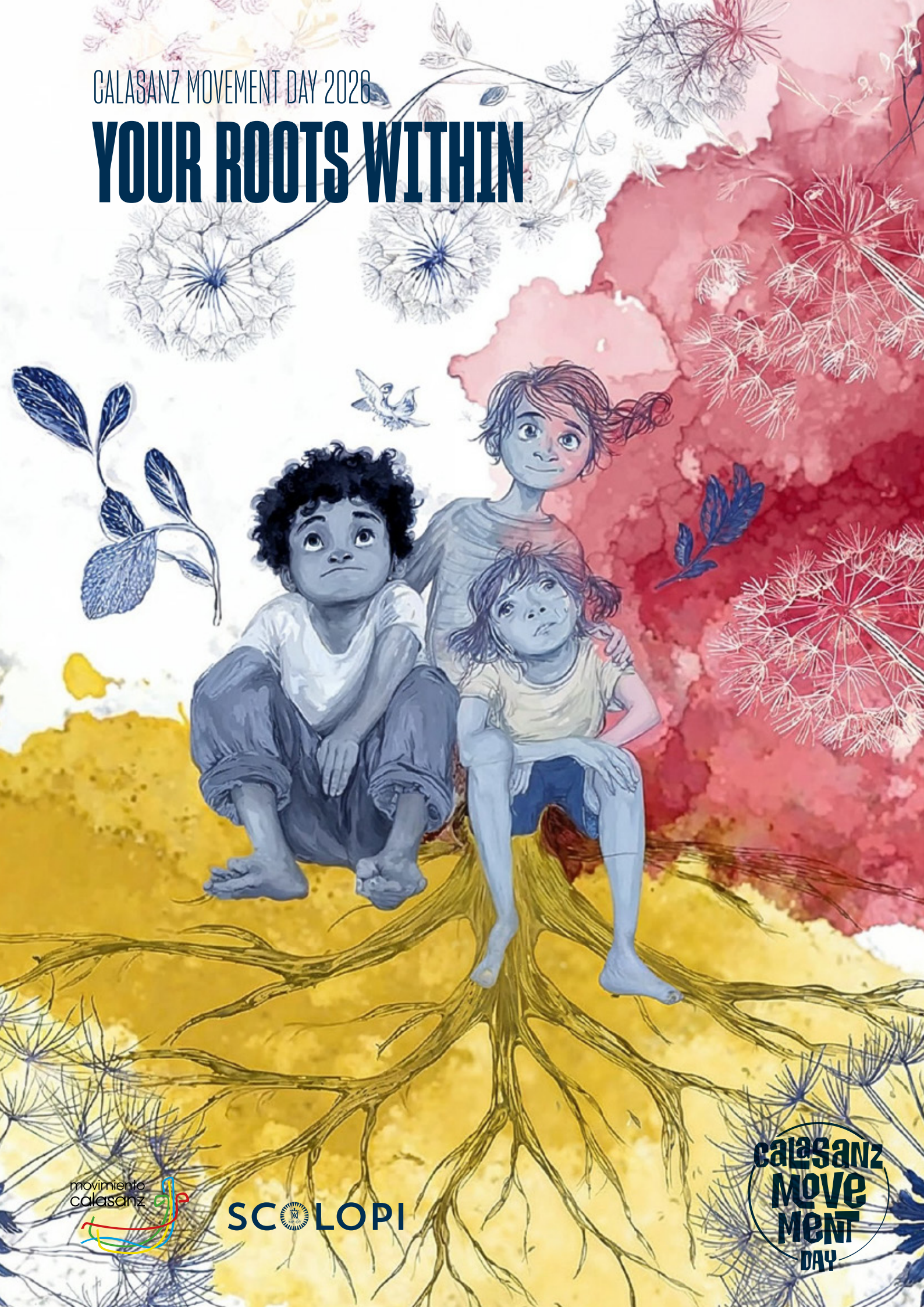


CALASANZ MOVEMENT DAY 2026

YOUR ROOTS WITHIN



SCOLLOPI

calasanz
MOVE
MENT
DAY

MEETING CALASANZ MOVEMENT DAY

PRAYER

Matthew 7:16–20

We invite you to create a quiet setting where the young people can listen to the Word of God. Our goal is for them to reflect, through the reading of the Gospel, on the kind of fruit they are bearing.

It would be helpful to provide the young people with a copy of the Gospel and a space to write down their reflections. You may read the Gospel twice to give them the opportunity to listen to it and then meditate on it.

The Gospel according to Matthew

By their fruits you will know them. Do people pick grapes from thornbushes, or figs from thistles? Just so, every good tree bears good fruit, and a rotten tree bears bad fruit. A good tree cannot bear bad fruit, nor can a rotten tree bear good fruit. Every tree that does not bear good fruit will be cut down and thrown into the fire. So by their fruits you will know them.

QUESTIONS FOR REFLECTION:

1. What word or phrase from the Gospel caught your attention?
2. What do you think the Lord is saying to you through this passage from the Gospel?
3. What kind of fruit do you think you are bearing? (If you'd like, you can draw the fruit you are bearing.)
4. How do you think you can bear good fruit?
5. What do you think God is inviting you to commit to?



FORMATION

IDENTIFYING OUR ROOTS

Prepare an area with soil, and if you can find different types of plants with various root structures, it would be good for the students to have the opportunity to explore them and take notes on their discoveries before you begin, without needing to introduce the topic. The first instruction would be: explore the following area and write down what you see and experience. After that exploration, you can form small groups so they can share what they found; once they've shared, bring them back together to continue the reflection. Reflection on roots—in a broader sense, and from there, to identify two things: what kind of root I am, and then, to explore how we nourish our roots. The following reflection might offer some insight to help guide this topic.

WHAT KIND OF ROOTS DOES YOUR FAITH HAVE?

This article comes from: <https://miembros.id-dam.org/blogs/blogs-de-jovenes/que-clase-de-raices-tiene-tu-fe/>

A tree's roots absorb water from the soil and, in the process, also take up a variety of minerals and other nutrients dissolved in it.

Roots also anchor the tree to the ground. When there is a major storm, trees stay in place thanks to their roots. But not all roots are the same; some provide more support than others. For example, poplars have fairly shallow roots.

We often sing the hymn based on the words of Psalm 1:3: "He is like a tree planted by streams of water, which yields its fruit in season and whose leaf does not wither—whatever he does prospers."

There is a very important spiritual analogy here. Trees are green and healthy when they have enough water. In turn, water is a symbol of God's Holy Spirit (John 7:38–39).

In Ephesians 3:17, Paul used a similar analogy and urges us to be "rooted and grounded in love," which is an essential characteristic of God.

It takes time for roots to grow deep into the ground. Young trees are sometimes vulnerable to the ele-

ments because of their shallow roots, but mature trees with deep roots can withstand many natural adversities.

What kind of roots are you developing in your faith? Let's examine some types of roots and see what spiritual lessons we can learn from them.

AERIAL ROOTS

Some trees have aerial roots, which grow above the ground. These types of roots are not very effective at absorbing moisture or anchoring the tree against the wind.

Aerial roots can be compared to superficial or shallow roots, such as a faith based solely on attending church because your parents take you there every week. The truth is not automatically absorbed into your personal convictions when you are still dependent on your parents' faith. People like this attend church in person, but they do not pay enough attention, are not helpful, or do not interact with other members of the congregation.

To borrow a line from the movie Star Wars: "These are not the roots you are looking for."

SHALLOW ROOTS

Shallow roots extend only a couple of meters below the surface of the ground. They are in the soil,

but they provide the tree with neither support nor nutrients. When rain falls, bringing the water that gives life to plants, most of the water is absorbed within the first few meters from the surface.

These roots can represent the connections we make with the things of God. God is pleased when we begin to do what we know is right. As we begin to follow God's path, we start to learn more and more. This is a crucial part of accepting your calling: you demonstrate how much you accept it through the decisions you make every day.

For example, when you're invited to play soccer or basketball on a Friday night or Saturday afternoon, what do you decide? When you choose God's path over another, your roots grow.

Of course, this principle also works the other way around. Every time you choose the world's path, your roots shrink and won't grow. If you make the wrong choice too many times, your roots might even die. That is the path that leads to rejecting your calling.

PRIMARY ROOTS

Some trees develop a primary root. A primary root is long and extends deep into the ground to absorb water. However, a tree can only develop a primary root under special circumstances. For example, if an oak tree (which is capable of developing a primary root) grows in a location where there are only 15 centimeters between the surface and the bedrock, it will not form a primary root. The root cannot grow through the rock.

This root firmly anchors the tree against the wind. It provides the tree with a constant source of water that persists even during long droughts. Trees that live for thousands of years usually have a taproot.

Developing a taproot in faith involves having very deep roots. It means you have gone beyond making good decisions; it means you actively pray to God daily and study His Word. Good soil conditions include being surrounded by God's Church and having your closest friendships with people from the Church.

A holy life makes your roots grow; an unholy life makes them shrink.

When your primary root grows strong enough, you realize that this is your faith. Eventually, you will be ready to entrust your life to God through baptism, and you will have full access to God's Holy Spirit, just as a primary root has access to the water and nutrients in the soil.

As deep as your spiritual root is, so too is your steadfastness in facing trials... and trials will come. With a deep root, you can stand firm, no matter what life throws your way.

Consider these two scriptures:

- » Proverbs 12:3, "A man will not be established by wickedness, but the root of the righteous will not be uprooted."
- » Jeremiah 17:8, "For he will be like a tree planted by the water, which sends out its roots by the stream; it does not fear when heat comes, but its leaves remain green; and in a year of drought it does not wither, nor does it cease to bear fruit."



START PUTTING DOWN ROOTS

You're never too young to start putting down roots. In the Bible, God says that He has worked with people even before they were born. Jeremiah and John the Baptist are just a couple of examples.

God is ready and waiting to open your mind to deeper and deeper levels of understanding, but that depends on what you do with what you already know.

So, how deep are your roots growing?

Things to do to help your roots grow deeper:

- » Commit to your faith
- » Gather in community

- » Seek to deepen your relationship with God: prayer, sacraments
- » Let yourself be accompanied
- » Persevere
- » What else might help you?

Trees have different kinds of roots. We will be planted and rooted in God's love, in truth, and in faith. Do what you know you must do, and God will reveal to you a better and deeper understanding of his truth.

Once you've finished discussing this, you can have them identify what kind of roots they are and what they need to grow.



GROUP ACTIVITY:

Create a drawing featuring deep roots that support the MC logo or the event logo. On those roots, they will write down what they think will help them grow as individuals and as a group.

They can paint the drawing, add elements, etc. Let them use their imagination.

CONTEMPLATING WITH GLICERIO:

You may also read the book of ***Heart and soar. The vocation of Glicerio- Of Christ as Glicerio (pages 27-30)*** This segmented reading may help the moderator leading the first session in their reflection.

https://edicionescalasancias.org/wp-content/uploads/2023/05/Heart_and_Soar_web.pdf

ACTIVITIES TO DO WITH YOUNG PEOPLE:

Here is a link to 6 different activities you can use with young people to help them have some fun.

<https://www.masimpulsoglobal.com/juegos-con-proposito-para-jovenes-cristianos/>

